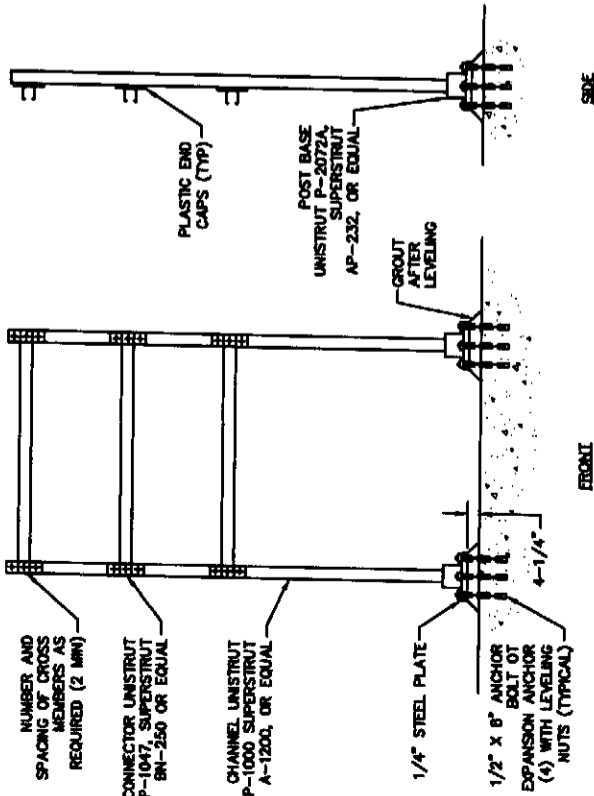


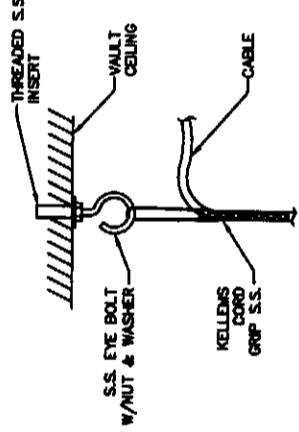
- NOTES:**
1. MAINTAIN 12" MIN. SEPARATION BETWEEN AC & DC OR SIGNAL CONDUITS.
 2. PROVIDE 2" SEPARATION BETWEEN MULTIPLE CONDUITS AND NEAREST SIDEWALL.
 3. TRENCH WIDTH TO BE AS REQUIRED TO ACCOMMODATE ALL CONDUITS/SERVICES.
 4. BACKFILL IN ACCORDANCE WITH UTILITY TRENCHING STANDARDS.
 5. CONDUIT SHALL BE BEDDED W/SAND (3" BASE & 3" COVER).
 6. SEE CONDUIT SCHEDULE FOR CONDUIT QUANTITY AND SIZE.

RACEWAY DETAIL
SCALE: NONE

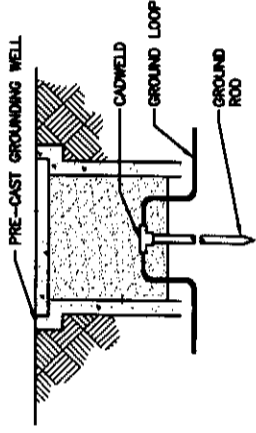


- NOTES:**
1. RACK CHANNELS AND FITTINGS SHALL BE GALVANIZED STEEL.

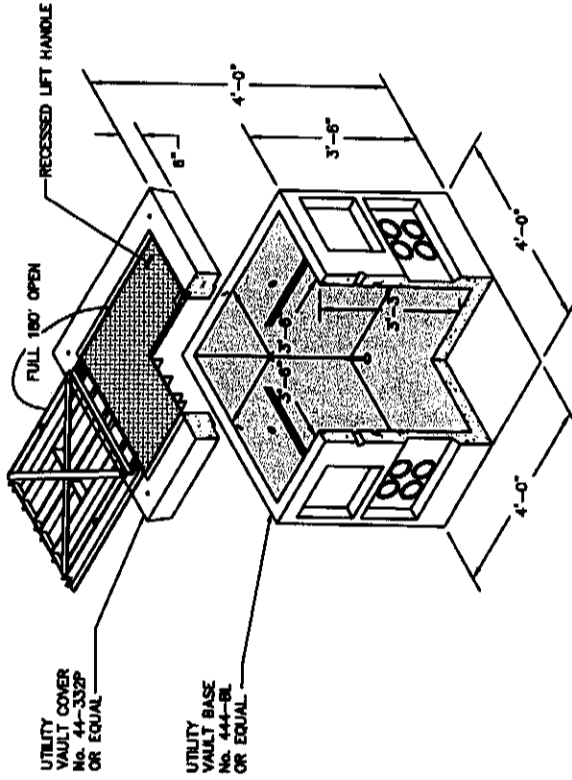
EQUIPMENT RACK
SCALE: NONE



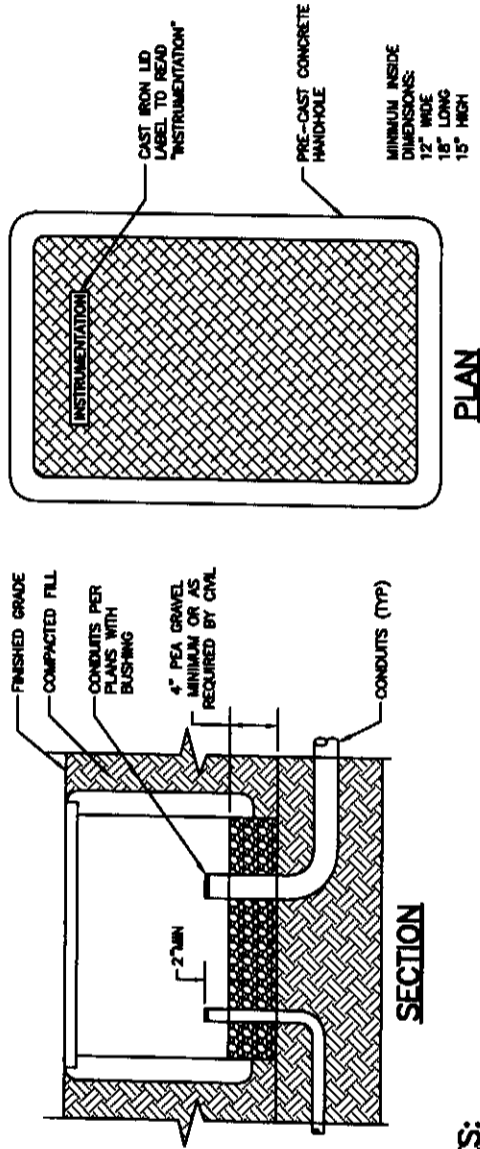
CABLE GRIP DETAIL
SCALE: NONE



CONCRETE ENCASED GROUND ROD DETAIL
SCALE: NONE

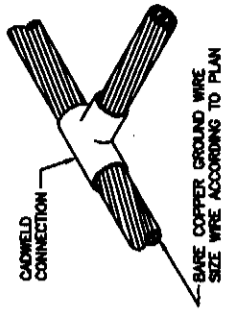


POWER HANDHOLE DETAIL
SCALE: NONE

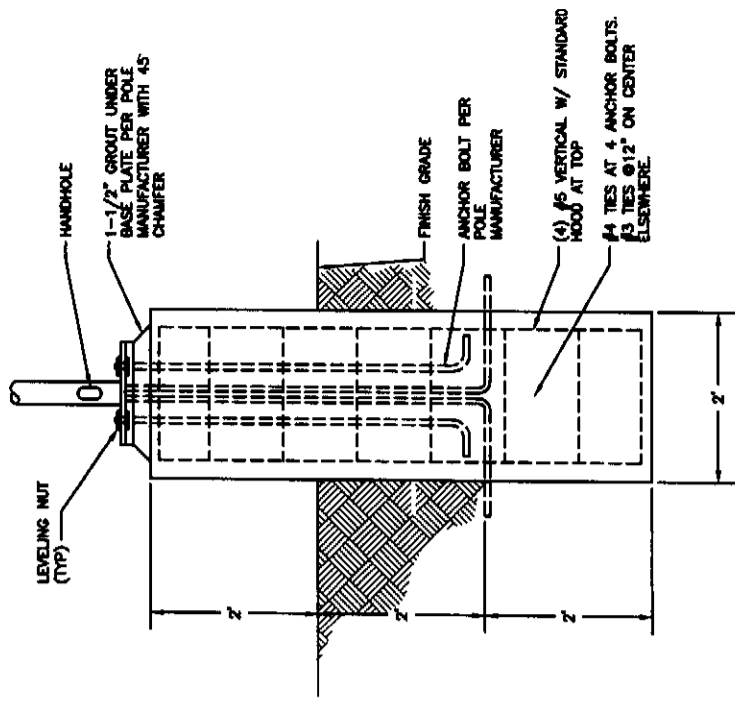


- NOTES:**
1. LD RATING IN VEHICULAR TRAFFIC AREAS: H-20
 2. LD RATING IN INCIDENTAL VEHICULAR TRAFFIC AREAS: H-10
 3. LD RATING IN NON VEHICULAR TRAFFIC AREAS: DESIGN FOR PURPOSE

INSTRUMENTATION HANDHOLE DETAIL
SCALE: NONE



CADWELD DETAIL
SCALE: NONE



LIGHT POLE BASE DETAIL
SCALE: NONE

GENERAL NOTES

DESIGNED BY	BZ
DRAWN BY	FSM
CHECKED BY	SE
APPROVED BY	DAB
DATE PRINTED	SEPT 2007
SCALE	AS SHOWN
P.L. NO.	

REVISIONS



HAMMOND COLLIER
WADE LIVINGSTONE

SEATTLE (206) 632-2664
OMAK (509) 826-5861
WENATCHEE (509) 662-1762
LAKEWOOD (253) 472-3192

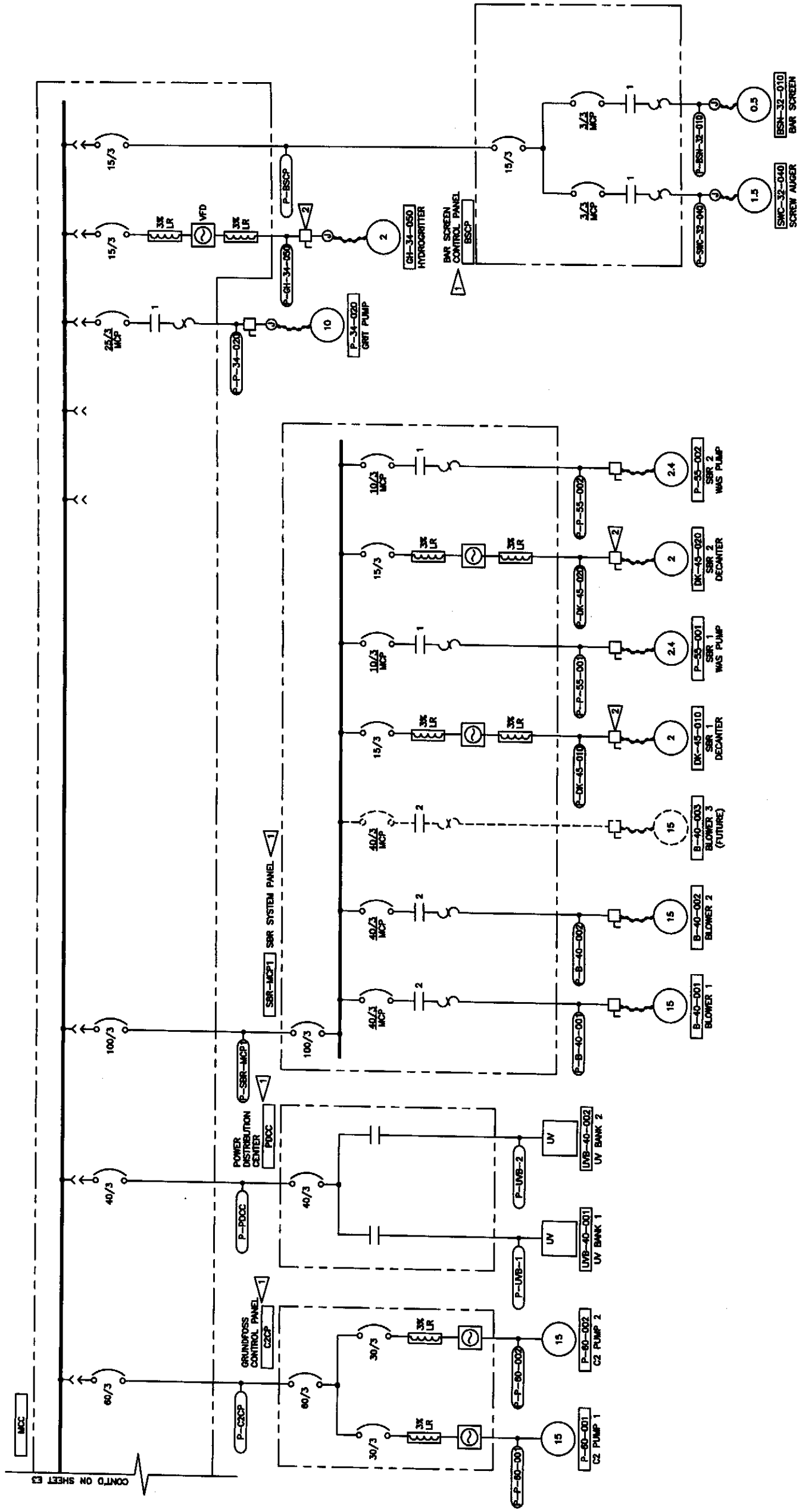
CITY OF ENTIAI
2007 WASTEWATER TREATMENT
FACILITIES IMPROVEMENTS

ELECTRICAL DETAILS

JOB NO. 052304-03
DRAWING NO. E2
SHEET OF

FLAG NOTES:

- 1 EQUIPMENT IS PART OF A PACKAGED SYSTEM. THE LOCATIONS AND CONNECTION REQUIREMENTS SHOWN ON THESE PLANS ARE SCHEMATIC. REFER TO APPROVED MANUFACTURER SUBMITTALS FOR FINAL INSTALLATION REQUIREMENT.
- 2 INTERLOCK DISCONNECTS WITH MOTOR CONTROLLERS TO SHUT DOWN CONTROLLER WHEN DISCONNECT IS IN OPEN POSITION



**HAMMOND COLLIER
WADE LIVINGSTONE**

SEATTLE (206) 633-2664
WENATCHEE (509) 662-1762
OMAK (509) 828-5861
LAKEWOOD (253) 472-1992

GENERAL NOTES

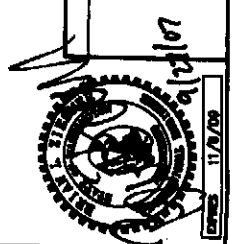
REVISIONS

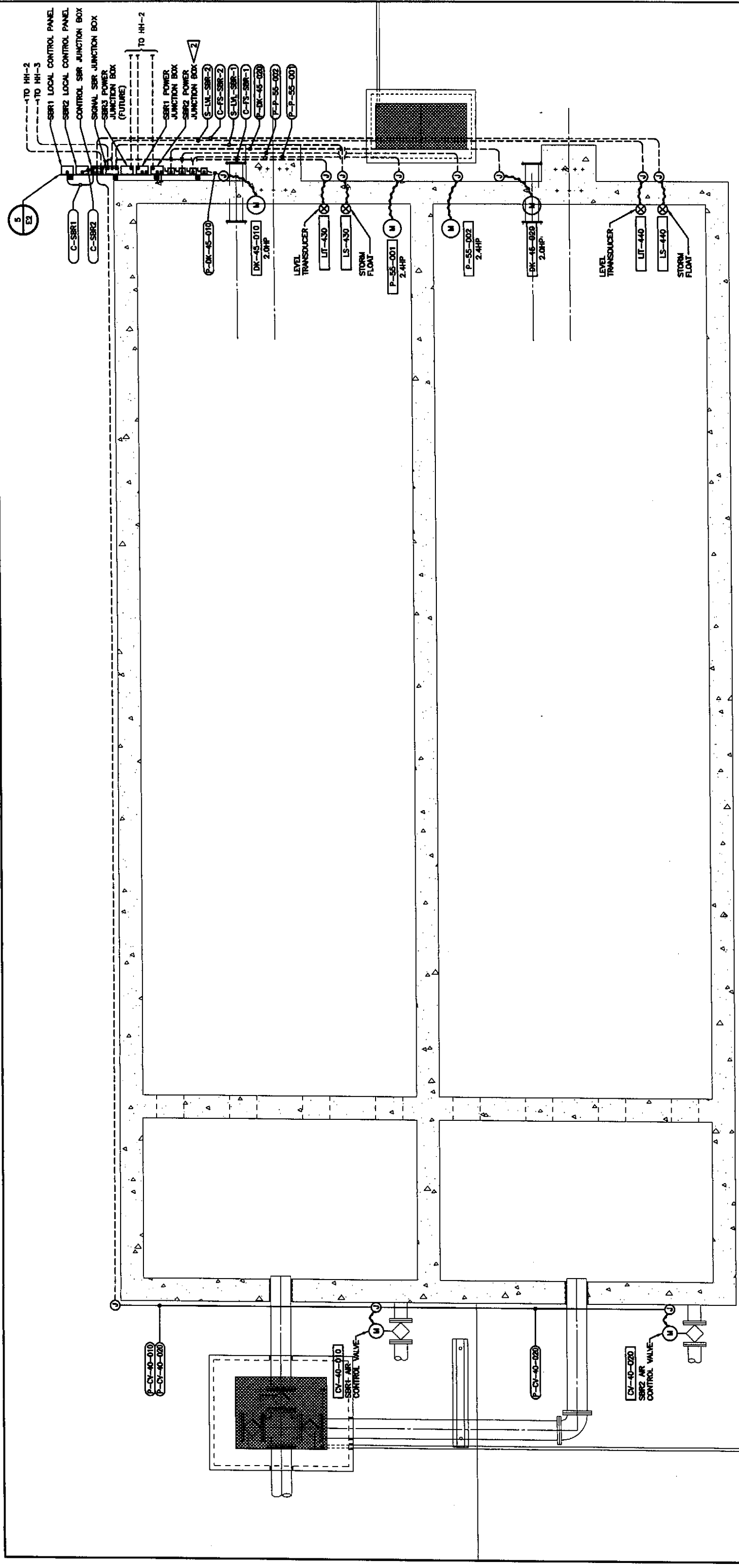
DESIGNED BY	BZ
DRAWN BY	RSM
CHECKED BY	SE
APPROVED BY	CMAB
DATE PRINTED	SEPT 2007
SCALE	AS SHOWN
P.L. NO.	

CITY OF ENTIAI
2007 WASTEWATER TREATMENT
FACILITIES IMPROVEMENTS

ELECTRICAL ONE-LINE DIAGRAM - SHEET 2

JOB NO.	052304-03
DRAWING NO.	E4
SHEET	OF





SBR ELECTRICAL PLAN
SCALE: 3/8"=1'-0"

FLAG NOTES:

- 1 SEE SHEET E10 FOR LIGHTING SCHEDULE.
- 2 EQUIPMENT IS PART OF A PACKAGED SYSTEM. THE LOCATIONS AND CONNECTION REQUIREMENTS SHOWN ON THESE PLANS ARE SCHEMATIC. REFER TO APPROVED MANUFACTURER SUBMITTALS FOR FINAL INSTALLATION REQUIREMENT.

TO SHEET E5
1"=2#12, #12 AND



DESIGNED BY	BZ
DRAWN BY	RSM
CHECKED BY	SE
APPROVED BY	DAB
DATE PRINTED	SEPT 2007
SCALE	AS SHOWN
P.A. NO.	

GENERAL NOTES

REVISIONS



HAMMOND COLLIER
WADE LIVINGSTONE
SEATTLE (206) 632-2664
WENATCHEE (509) 663-1762
OMAK (509) 825-5861
LAKEWOOD (253) 472-1592

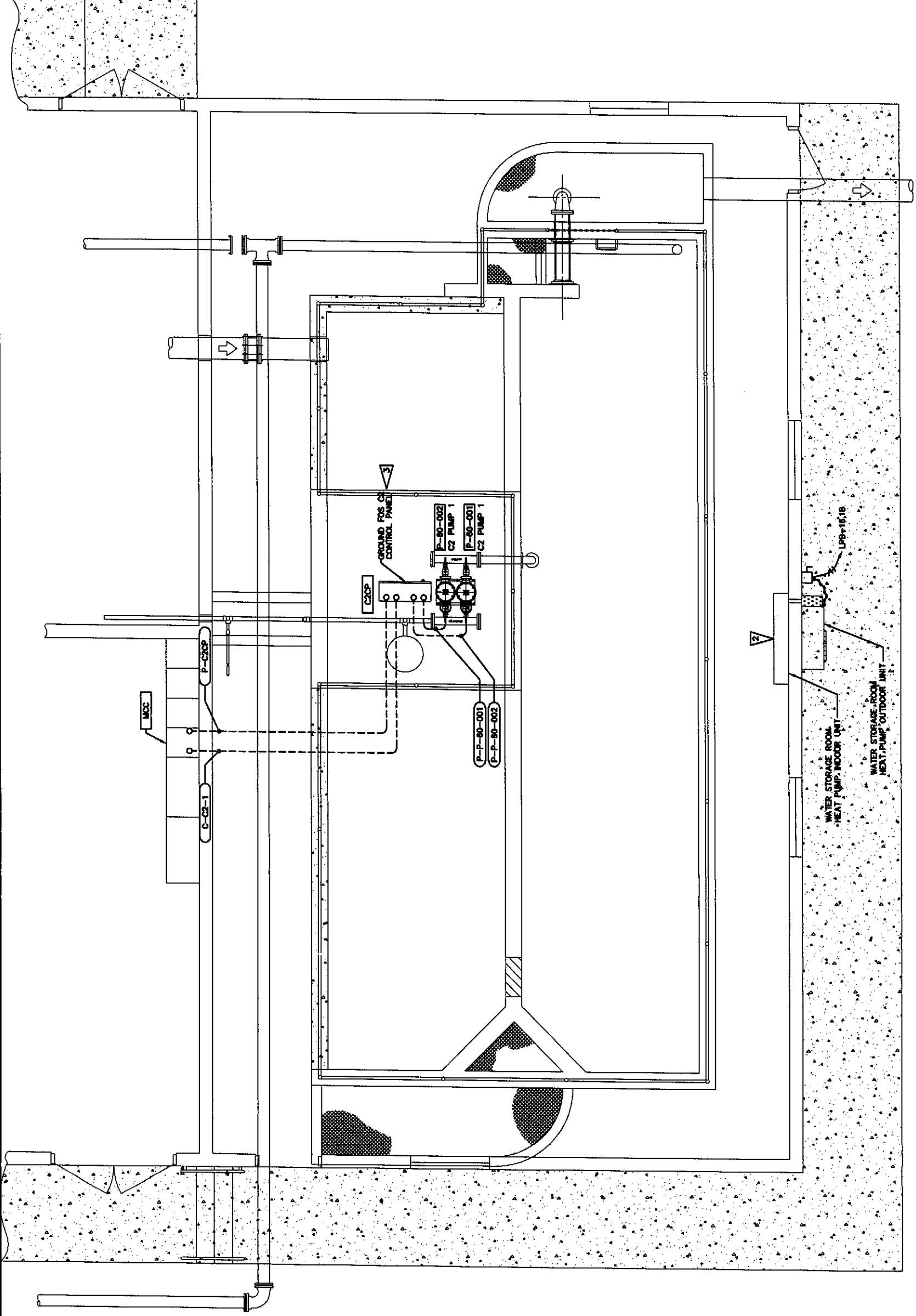
CITY OF ENTIAI
2007 WASTEWATER TREATMENT
FACILITIES IMPROVEMENTS

SBR ELECTRICAL PLAN

JOB NO.	052304-03
DRAWING NO.	E7
SHEET	OF

FLAG NOTES:

- 1 STUB UP AND CAP FOR FUTURE EQUIPMENT.
- 2 COORDINATE HEAT PUMP SYSTEM REQUIREMENTS WITH MANUFACTURER AND PROVIDE ALL REQUIRED EQUIPMENT FOR A COMPLETE AND OPERATIONAL SYSTEM.
- 3 EQUIPMENT IS PART OF A PACKAGED SYSTEM. THE LOCATIONS AND CONNECTION REQUIREMENTS SHOWN ON THESE PLANS ARE SCHEMATIC. REFER TO APPROVED MANUFACTURER SUBMITTALS FOR FINAL INSTALLATION REQUIREMENT.



**PLANT WATER STORAGE BUILDING
ELECTRICAL PLAN**
SCALE: 3/8"=1'-0"



REVISIONS

GENERAL NOTES

DESIGNED BY	BZ
DRAWN BY	RSM
CHECKED BY	SE
APPROVED BY	DMS
DATE PRINTED	SEPT 2007
SCALE	AS SHOWN
P.L. NO.	

**HAMMOND COLLIER
WADE LIVINGSTONE**



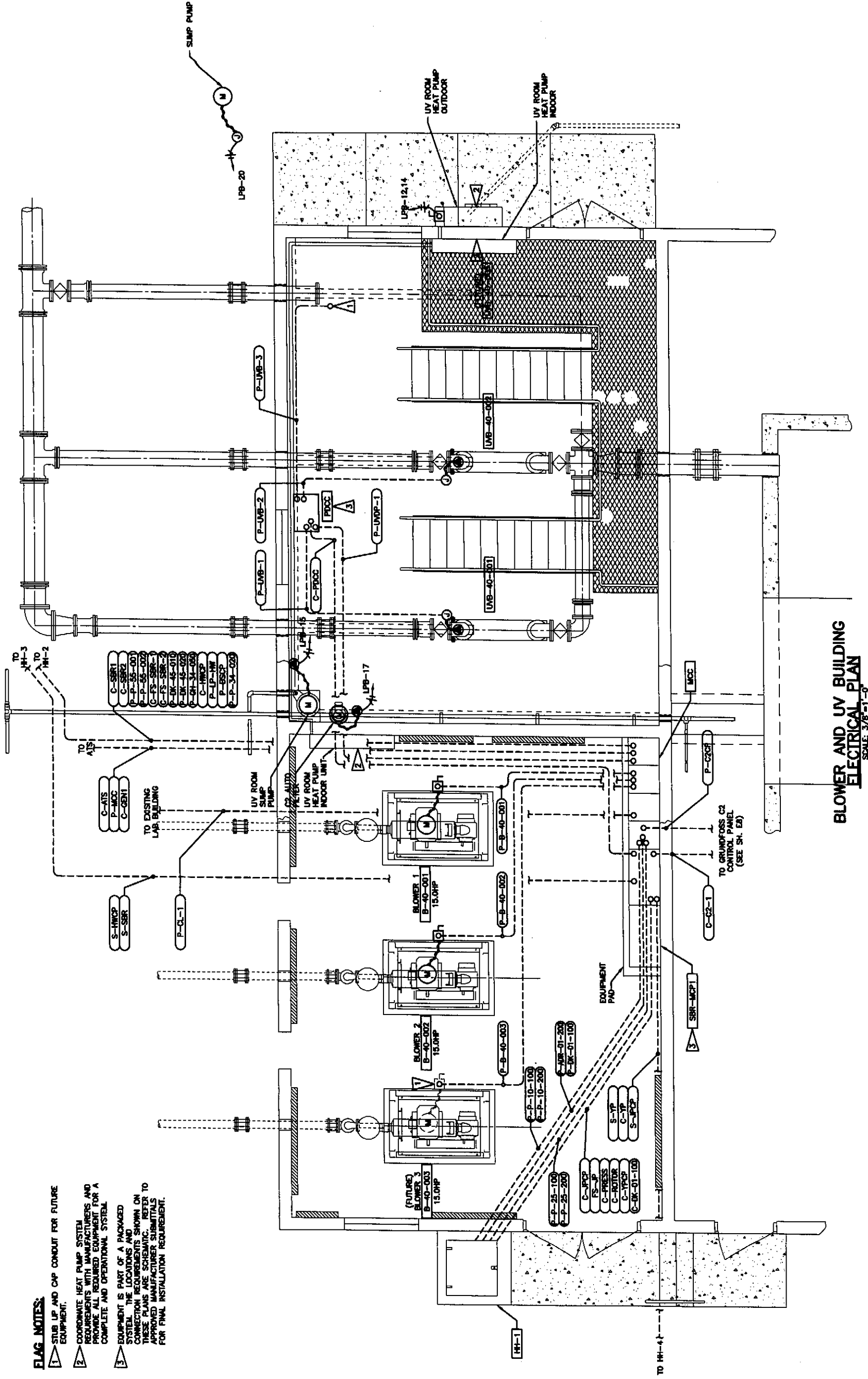
SEATTLE (206) 632-2664
WENATCHEE (509) 662-1762
OLYMPIA (360) 826-5861
LAKEMOOD (253) 472-1992

CITY OF ENTIAI
2007 WASTEWATER TREATMENT
FACILITIES IMPROVEMENTS
PLANT WATER STORAGE BUILDING
ELECTRICAL PLAN

JOB NO.	052304-03
DRAWING NO.	E8
SHEET	OF

FLAG NOTES:

- 1 STUB UP AND CAP CONDUIT FOR FUTURE EQUIPMENT.
- 2 COORDINATE HEAT PUMP SYSTEM REQUIREMENTS WITH MANUFACTURERS AND PROVIDE ALL REQUIRED EQUIPMENT FOR A COMPLETE AND OPERATIONAL SYSTEM.
- 3 EQUIPMENT IS PART OF A PACKAGED SYSTEM. THE LOCATIONS AND SYSTEMS SHOWN ON THESE PLANS ARE SCHEMATIC. REFER TO APPROVED MANUFACTURER SUBMITTALS FOR FINAL INSTALLATION REQUIREMENT.



BLOWER AND UV BUILDING ELECTRICAL PLAN
SCALE: 3/8"=1'-0"



REVISIONS

GENERAL NOTES

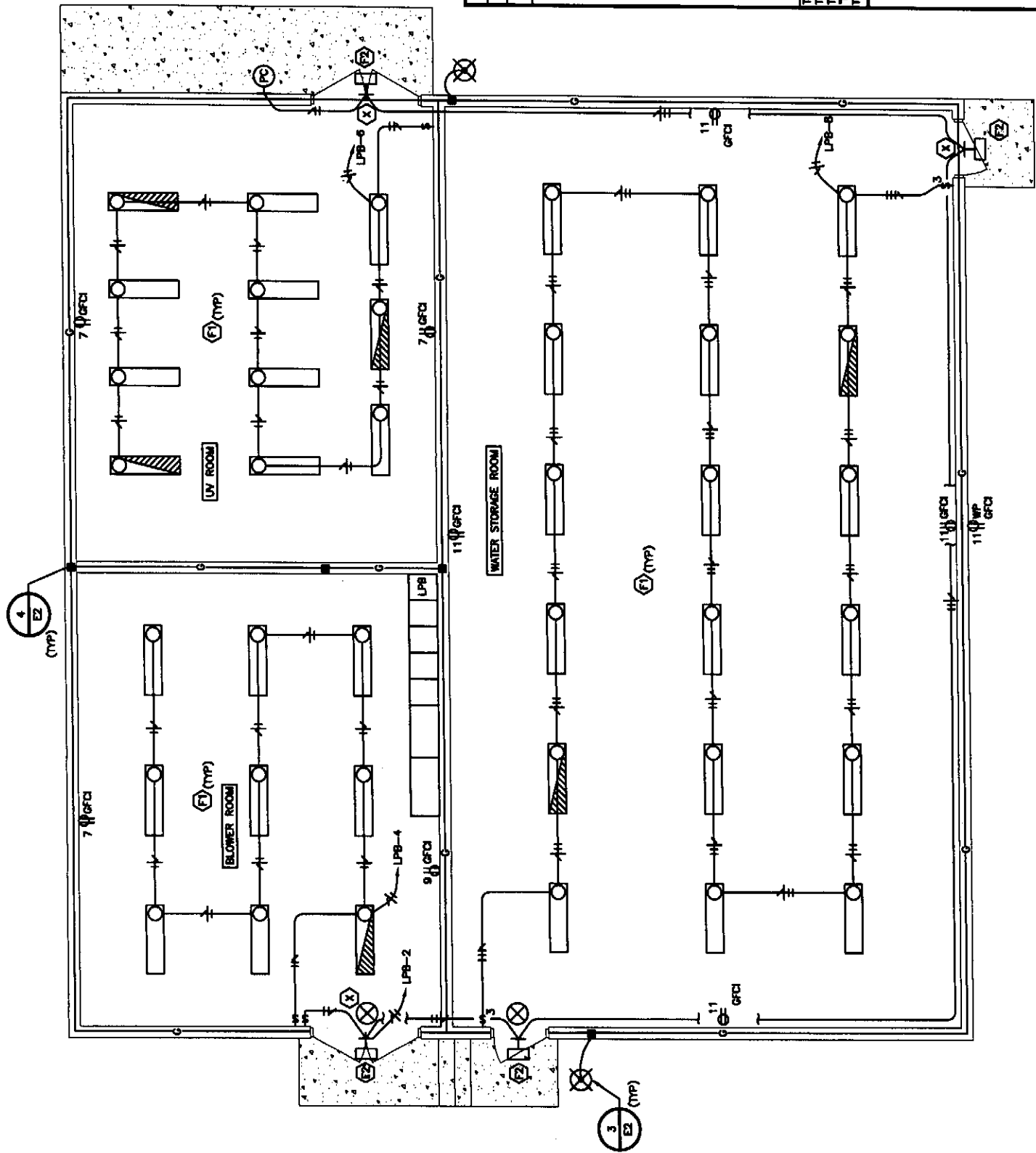
DESIGNED BY	BZ
DRAWN BY	RSM
CHECKED BY	SE
APPROVED BY	DNB
DATE PRINTED	SEPT 2007
SCALE	AS SHOWN
F.I.E. NO.	

SEATTLE (206) 633-2664
 WENATCHEE (509) 662-1762
 OMAHA (509) 826-5861
 LAKESIDE (253) 472-1992

HAMMOND COLLIER
WADE LIVINGSTONE



CITY OF ENTIAT
 2007 WASTEWATER TREATMENT FACILITIES IMPROVEMENTS
 BLOWER AND UV BUILDING ELECTRICAL PLAN



NEW CONTROL BUILDING
LIGHTING AND GROUNDING PLAN
SCALE: 1/4"=1'-0"

FIXTURE SCHEDULE

ID	DESCRIPTION	LAMP	MOUNTING	FIXTURE TYPE
(F1)	4" 2 LAMP INDUSTRIAL FLUORESCENT, GASKETED ALUMINUM HOUSING WITH MET LABEL, INJECTION MOLDED WRAP AROUND LENS, CORROSION RESISTANT FINISH WITH BATTERY PACK FOR EMERGENCY LIGHTING WHERE INDICATED	2-32W T8	CHAIN OR SURFACE	LITHONIA DMW SERIES
(F2)	WALL MOUNTED PERIMETER LIGHT, DIE CAST ALUMINUM REAR HOUSING, ONE PIECE INJECTION MOLDED POLYCARBONATE DOOR AND LENS, -40°F NPF BALLAST	150W HFS	WALL	LITHONIA TWH SERIES
(F3)	WOODBRIDGE POLE MOUNTED DIE CAST ALUMINUM POST TOP AREA LIGHTWARE WITH INTERNAL TWISTLOCK PHOTO CONTROL, TYPE 3 POLYCARBONATE REFRACTOR, MOUNTS ON 3" POLE TOP.	250W HFS	POLE	WOODBRIDGE WWS WOODBRIDGE SERIES
(X)	DIE CAST LED EXIT SIGN, GREEN LETTERS.	LED	WALL	LITHONIA LOC SERIES

PANEL SCHEDULE

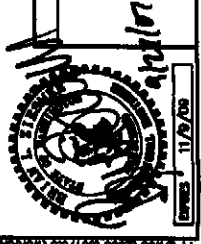
CIR NO	DESCRIPTION/LOCATION	200A BUS		200A M.C.B.		FLUSH MOUNTED		ENTRAT W/TP UPGRADE	27-SEP-07	
		LOAD (VA)	TYPE	LOAD (VA)	TYPE	CB AMP	CB POLE			
1	LP-LW	2,850	S	60	2	20	1	450	L	EXTERIOR LIGHTS
2		2,190	S			20	1	580	L	BLOWER ROOM LIGHTS
3		1,800	C	20	1	20	1	710	L	UV ROOM LIGHTS
4		360	R	20	1	20	1	1,180	L	WATER STORAGE ROOM LIGHTS
5	RECEPTACLES - UV ROOM	360	R	20	1	20	1			
6	RECEPTACLES - BLOWER ROOM	360	R	20	1	20	1			
7	RECEPTACLES - WS ROOM	900	R	20	1	20	1			
8	SPACE	900	R	20	1	20	1	3,170	H	UV ROOM HEAT PUMP
9	SPACE	900	R	20	1	20	1	3,170	H	UV ROOM HEAT PUMP
10	SPACE	900	R	20	1	20	1	3,170	H	UV ROOM HEAT PUMP
11	UV ROOM SUMP PUMP	750	M	20	1	20	1	2,800	H	WATER STORAGE HEAT PUMP
12	UV ROOM SUMP PUMP	750	M	20	1	20	1	2,800	H	WATER STORAGE HEAT PUMP
13	UV ROOM SUMP PUMP	750	M	20	1	20	1	2,800	H	WATER STORAGE HEAT PUMP
14	UV ROOM SUMP PUMP	750	M	20	1	20	1	2,800	H	WATER STORAGE HEAT PUMP
15	UV ROOM SUMP PUMP	750	M	20	1	20	1	2,800	H	WATER STORAGE HEAT PUMP
16	UV ROOM SUMP PUMP	750	M	20	1	20	1	2,800	H	WATER STORAGE HEAT PUMP
17	UV ROOM SUMP PUMP	750	M	20	1	20	1	2,800	H	WATER STORAGE HEAT PUMP
18	UV ROOM SUMP PUMP	750	M	20	1	20	1	2,800	H	WATER STORAGE HEAT PUMP
19	UV ROOM SUMP PUMP	750	M	20	1	20	1	2,800	H	WATER STORAGE HEAT PUMP
20	UV ROOM SUMP PUMP	750	M	20	1	20	1	2,800	H	WATER STORAGE HEAT PUMP
21	UV ROOM SUMP PUMP	750	M	20	1	20	1	2,800	H	WATER STORAGE HEAT PUMP
22	UV ROOM SUMP PUMP	750	M	20	1	20	1	2,800	H	WATER STORAGE HEAT PUMP
23	UV ROOM SUMP PUMP	750	M	20	1	20	1	2,800	H	WATER STORAGE HEAT PUMP
24	UV ROOM SUMP PUMP	750	M	20	1	20	1	2,800	H	WATER STORAGE HEAT PUMP
25	UV ROOM SUMP PUMP	750	M	20	1	20	1	2,800	H	WATER STORAGE HEAT PUMP
26	UV ROOM SUMP PUMP	750	M	20	1	20	1	2,800	H	WATER STORAGE HEAT PUMP
27	UV ROOM SUMP PUMP	750	M	20	1	20	1	2,800	H	WATER STORAGE HEAT PUMP
28	UV ROOM SUMP PUMP	750	M	20	1	20	1	2,800	H	WATER STORAGE HEAT PUMP
29	UV ROOM SUMP PUMP	750	M	20	1	20	1	2,800	H	WATER STORAGE HEAT PUMP
30	UV ROOM SUMP PUMP	750	M	20	1	20	1	2,800	H	WATER STORAGE HEAT PUMP
31	UV ROOM SUMP PUMP	750	M	20	1	20	1	2,800	H	WATER STORAGE HEAT PUMP
32	UV ROOM SUMP PUMP	750	M	20	1	20	1	2,800	H	WATER STORAGE HEAT PUMP
33	UV ROOM SUMP PUMP	750	M	20	1	20	1	2,800	H	WATER STORAGE HEAT PUMP
34	UV ROOM SUMP PUMP	750	M	20	1	20	1	2,800	H	WATER STORAGE HEAT PUMP
35	UV ROOM SUMP PUMP	750	M	20	1	20	1	2,800	H	WATER STORAGE HEAT PUMP
36	UV ROOM SUMP PUMP	750	M	20	1	20	1	2,800	H	WATER STORAGE HEAT PUMP
37	UV ROOM SUMP PUMP	750	M	20	1	20	1	2,800	H	WATER STORAGE HEAT PUMP
38	UV ROOM SUMP PUMP	750	M	20	1	20	1	2,800	H	WATER STORAGE HEAT PUMP
39	UV ROOM SUMP PUMP	750	M	20	1	20	1	2,800	H	WATER STORAGE HEAT PUMP
40	UV ROOM SUMP PUMP	750	M	20	1	20	1	2,800	H	WATER STORAGE HEAT PUMP
41	UV ROOM SUMP PUMP	750	M	20	1	20	1	2,800	H	WATER STORAGE HEAT PUMP
42	UV ROOM SUMP PUMP	750	M	20	1	20	1	2,800	H	WATER STORAGE HEAT PUMP

LOAD	CONNECTED LOADS	SUBTEND LOADS	TOTAL LOADS	DEMAND FACTOR	DEMAND LOAD
GENERAL (NON-COINT)	0	0	0	100%	0
LIGHTING	2,900	2,900	5,800	100%	5,800
RECEPTACLES - TO 10 KVA	1,620	1,620	3,240	100%	3,240
OVER 10 KVA	0	0	0	50%	0
KITCHEN HEATING	13,440	13,440	26,880	100%	26,880
MOTORS	1,450	1,450	3,800	100%	3,800
LARGEST MOTOR	900	900	900	100%	900
WATER HEATER	0	0	0	100%	0
CONTINUOUS GENERAL LOAD	1,800	1,800	3,600	125%	4,500
NON-COINCIDENT	0	0	0	0%	0
TOTALS	22,110 VA	22,110 VA	44,220 VA		46,795 VA

TOTAL DEMAND LOAD: 46.8 KVA 130.0 AMPS

ACCESSORIES
-Clear Defined Additional Panel Requirements

NOTES:
1. SOURCE = T-LPB



REVISIONS	GENERAL NOTES
DESIGNED BY: BZ DRAWN BY: RSM CHECKED BY: SE APPROVED BY: DMB DATE PRINTED: SEPT 2007 SCALE: AS SHOWN P.B. NO.	SEATTLE (206) 602-2664 WENATCHEE (509) 662-1762 OMAHA (800) 826-5861 LAKEWOOD (253) 472-1992

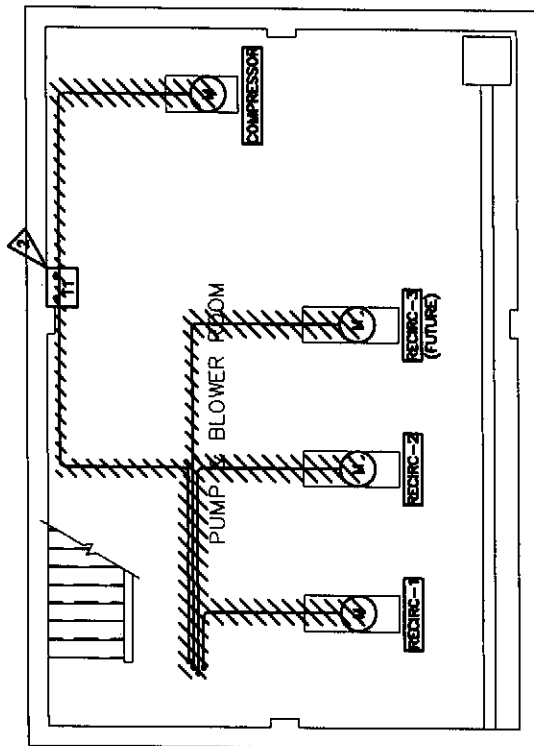
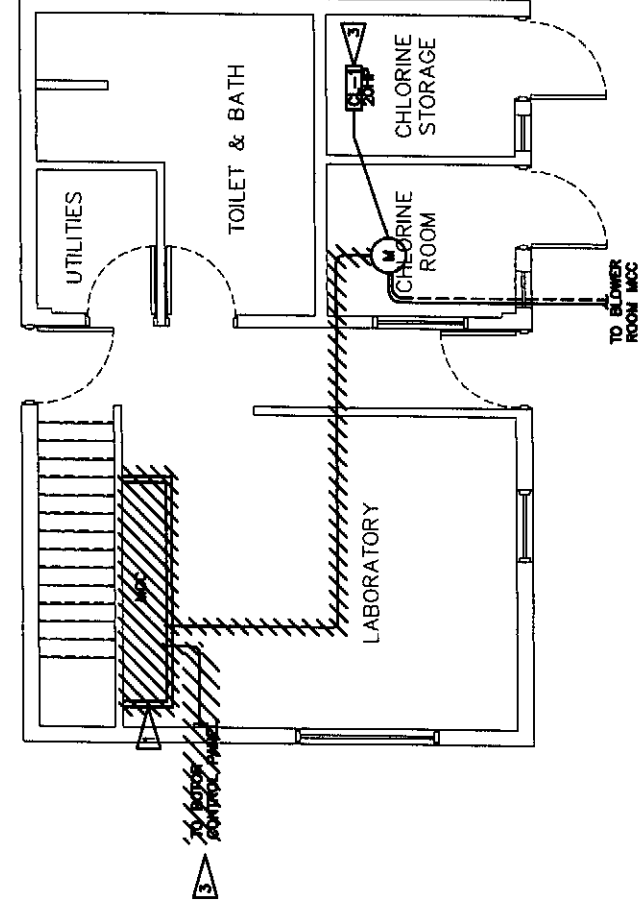
HAMMOND COLLIER
WADE LIVINGSTONE

CITY OF ENTAT
2007 WASTEWATER TREATMENT
FACILITIES IMPROVEMENTS

JOB NO. 052304-03
DRAWING NO. E10
SHEET OF

FLAG NOTES:

- 1 REMOVE EXISTING MCC AND ALL ELECTRICAL LOADS TO MCC. SEE SHEET E3.
- 2 MAINTAIN LIGHTING PANELS AND TRANSFORMER.
- 3 RE-ROUTE CHLORINE PUMP AND ROTOR TO NEW MCC. SEE SHEETS E2, E3.



**EXISTING CONTROL BUILDING
DEMO PLAN**
SCALE: 1/4"=1'-0"



11/19/09

GENERAL NOTES

DESIGNED BY	BZ
DRAWN BY	RSB
CHECKED BY	SE
APPROVED BY	DMS
DATE PRINTED	SEPT 2007
SCALE	AS SHOWN
P.L. NO.	

HAMMOND COLLIER
WADE LIVINGSTONE

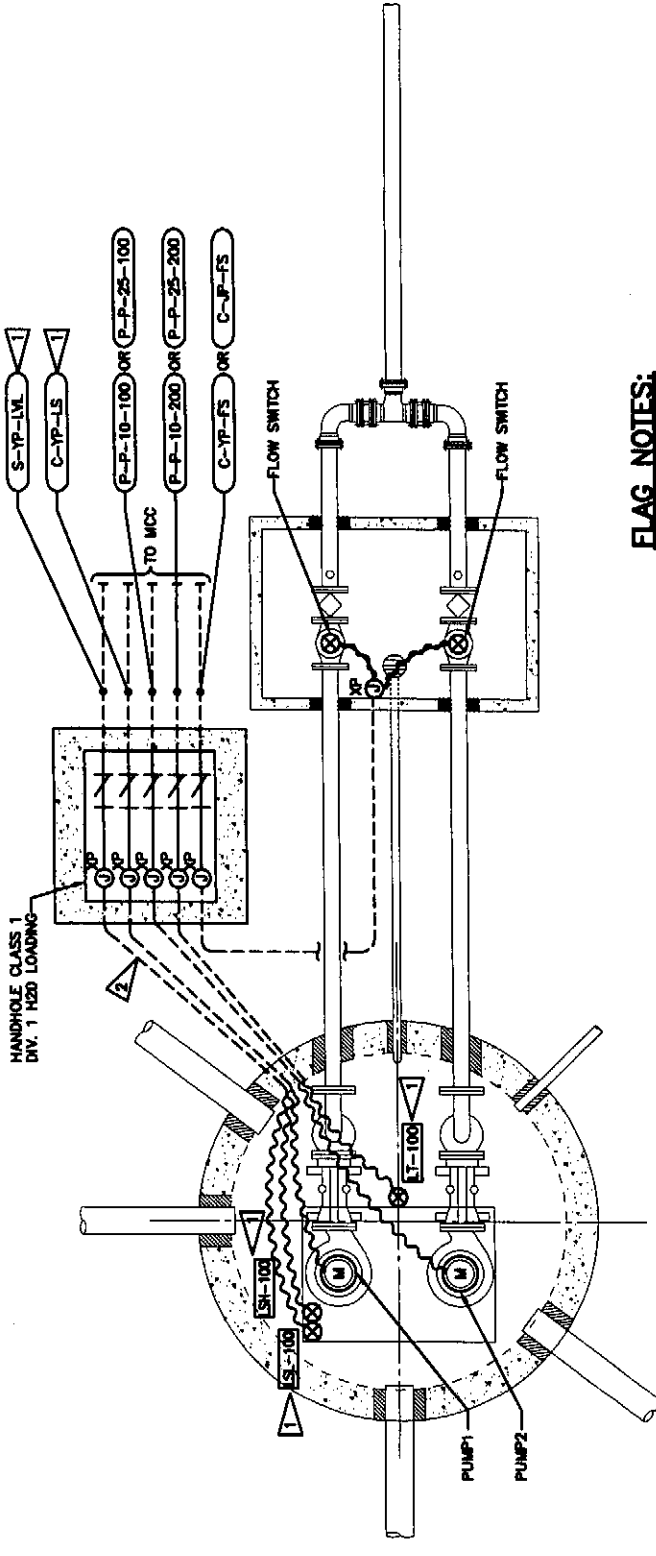
SEATTLE (206) 632-2664
 WENATCHEE (509) 662-1762
 OMAHA (509) 826-5861
 LAKEWOOD (253) 472-1992



CITY OF ENTIAT
2007 WASTEWATER TREATMENT
FACILITIES IMPROVEMENTS

EXISTING CONTROL BUILDING
DEMO PLAN

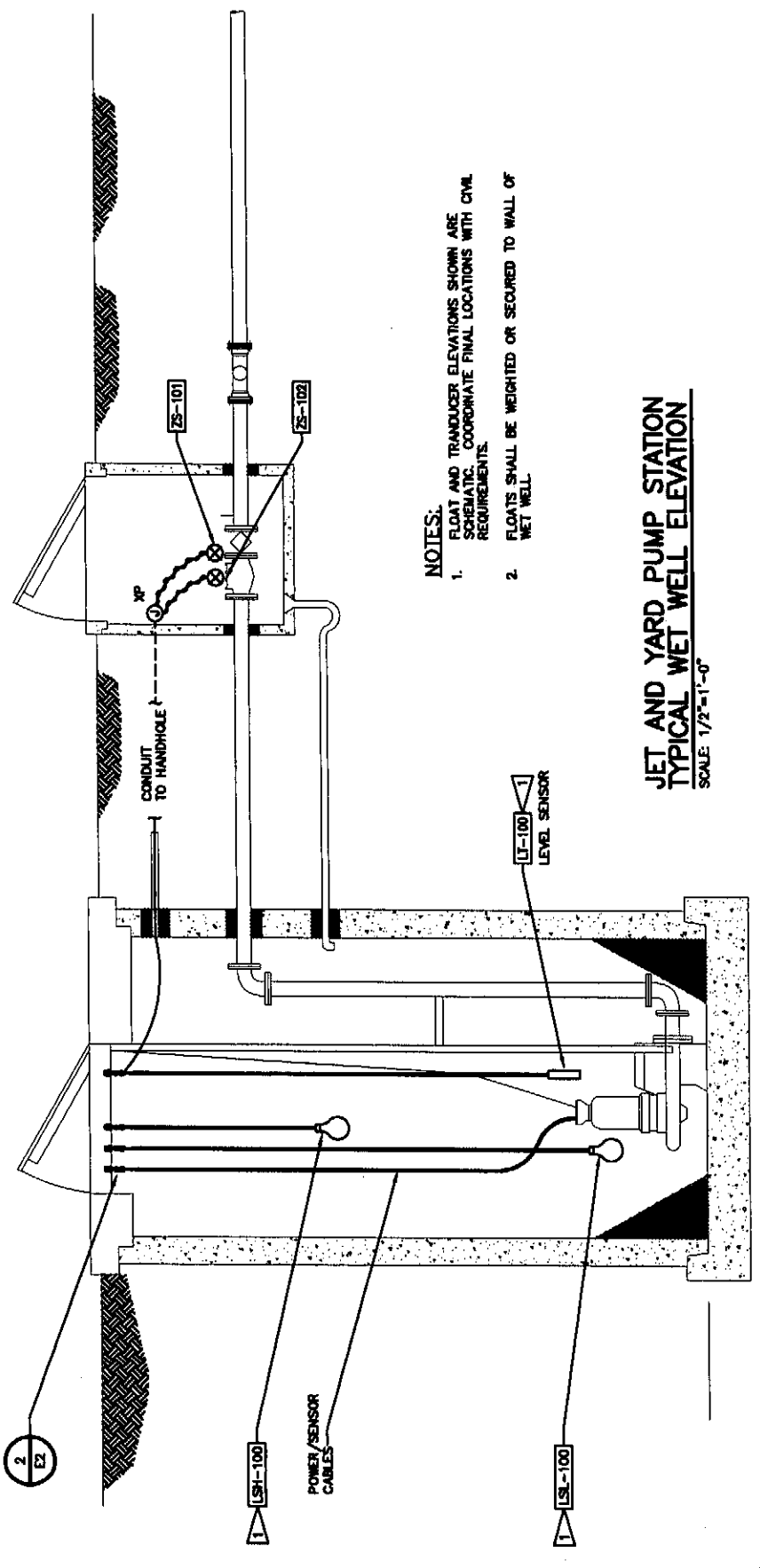
JOB NO.	052304-03
DRAWING NO.	E11
SHEET	OF



**JET AND YARD PUMP STATION
TYPICAL ELECTRICAL PLAN**
SCALE: 1/2"=1'-0"

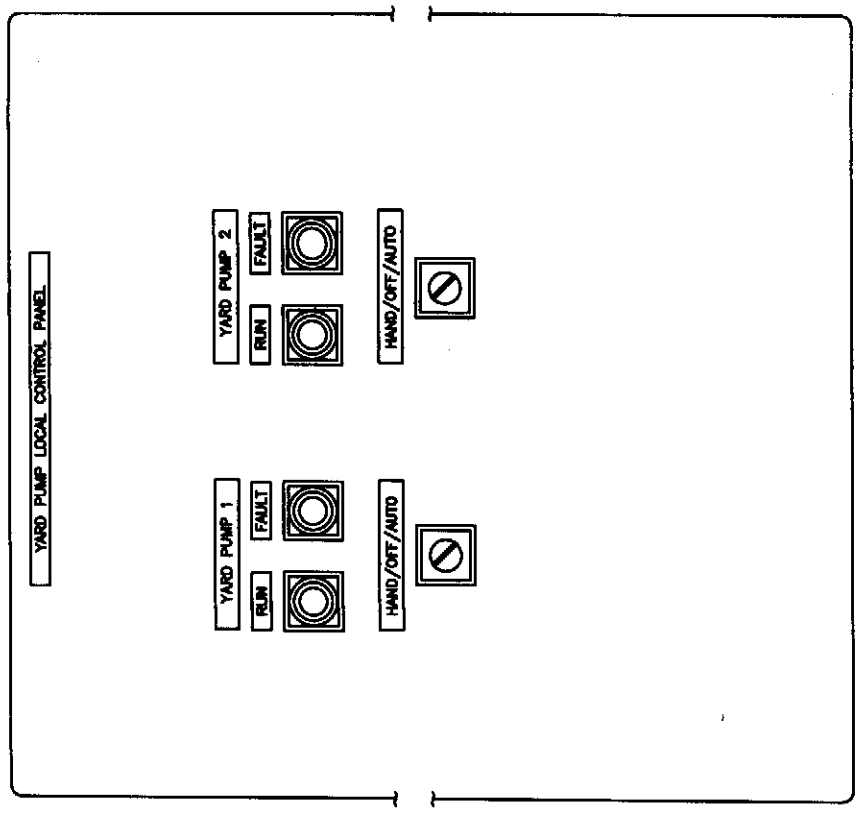
FLAG NOTES:

- 1. LEVEL SWITCHES AND TRANSDUCER FOR YARD PUMP STATION ONLY.
- 2. SIZE CONDUIT TO ACCOMMODATE EQUIPMENT CABLES PROVIDED BY MANUFACTURER.

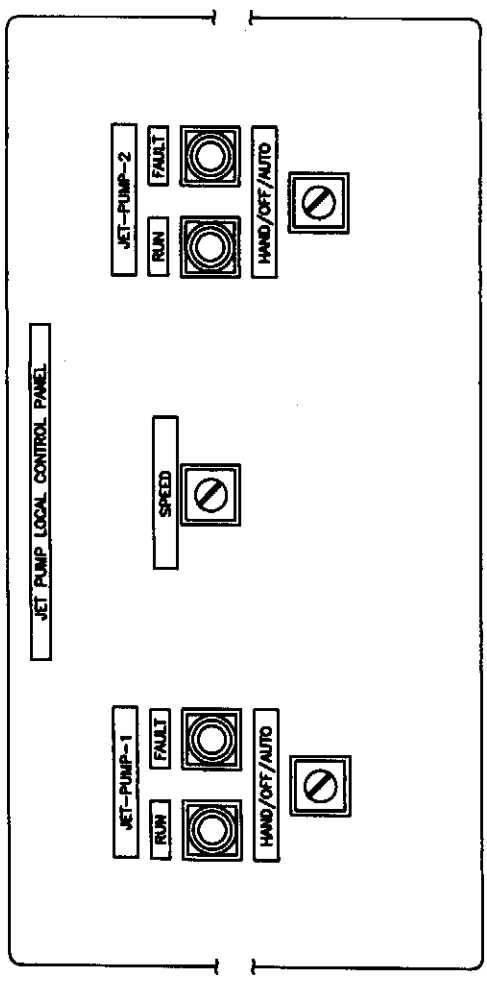


- NOTES:**
1. FLOAT AND TRANSDUCER ELEVATIONS SHOWN ARE SCHEMATIC. COORDINATE FINAL LOCATIONS WITH CIVIL REQUIREMENTS.
 2. FLOATS SHALL BE WEIGHTED OR SECURED TO WALL OF WET WELL.

**JET AND YARD PUMP STATION
TYPICAL WET WELL ELEVATION**
SCALE: 1/2"=1'-0"



YARD PUMP LOCAL CONTROL PANEL ELEVATION 1
SCALE: NONE



JET PUMP LOCAL CONTROL PANEL ELEVATION 2
SCALE: NONE



GENERAL NOTES

REVISIONS

DESIGNED BY	BZ
DRAWN BY	FSM
CHECKED BY	SE
APPROVED BY	DMS
DATE PLOTTED	SEPT 2007
SCALE	AS SHOWN
P.L. NO.	

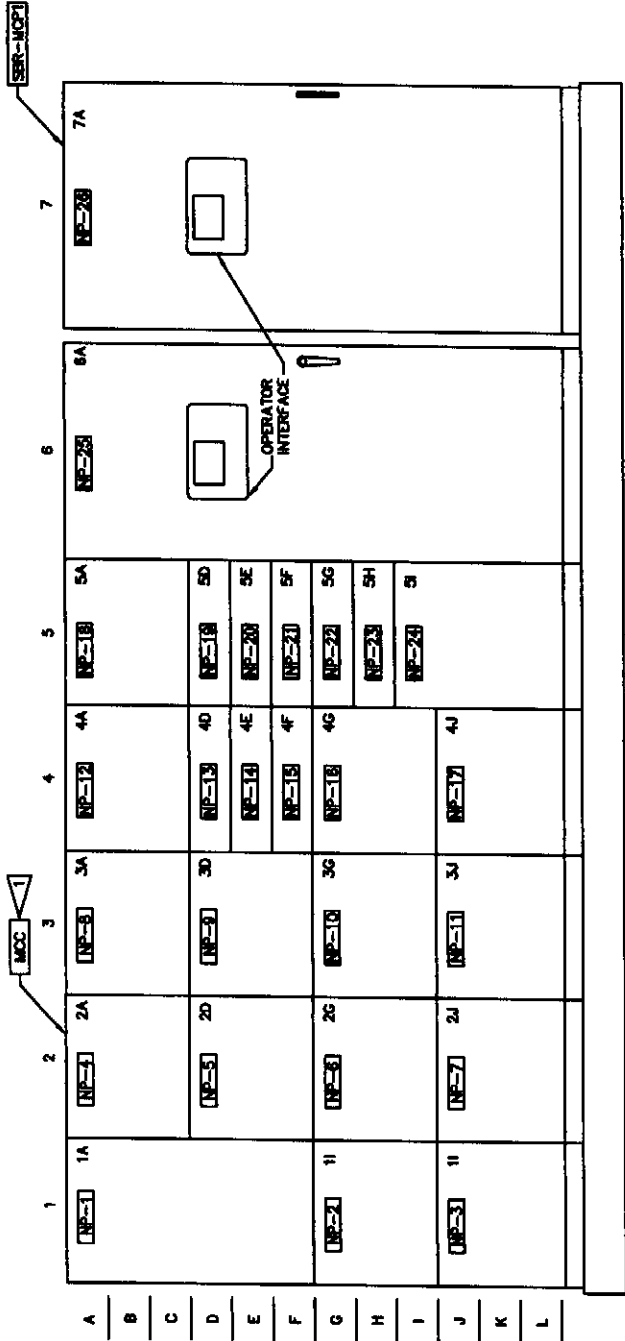
**HAMMOND COLLIER
WADE LIVINGSTONE**

SEATTLE (206) 652-5664
WENATCHEE (509) 662-1762
OMAK (809) 836-5861
LAKEWOOD (253) 472-1992

CITY OF ENTIAI
2007 WASTEWATER TREATMENT
FACILITIES IMPROVEMENTS

JOB NO. 052304-03
DRAWING NO. E12
SHEET OF

YARD PUMP STATION
ELECTRICAL PLAN



MOTOR CONTROL CENTER - ELEVATION
SCALE: NONE

FLAG NOTES:

1 MCC LAYOUT IS SCHEMATIC. CONTRACTOR SHALL SIZE MCC TO ACCOMMODATE ALL REQUIRED DESIGN FEATURES AND SUBMIT FOR ENGINEER APPROVAL.

NAMEPLATE	DESCRIPTION
NP-1	ENHANCING 1ST LINE/SECOND LINE
NP-2	PANELBOARD LPS
NP-3	TRANSFORMER T-LPS
NP-4	MAIN BREAKER
NP-5	JET PUMP #1/AVD
NP-6	JET PUMP #2/AVD
NP-7	SPARE
NP-8	VENTILATION DITCH MOTOR
NP-9	WIND PUMP #1
NP-10	WIND PUMP #2
NP-11	HYDROPUMP
NP-12	GRIIT PUMP
NP-13	SPARE
NP-14	UV SYSTEM
NP-15	C2 SYSTEM
NP-16	SM SCREEN SYSTEM
NP-17	CHLORINE PUMP
NP-18	SPARE
NP-19	POWER MONITOR
NP-20	TRANSFORMER T-LPS
NP-21	SPARE
NP-22	SER MCP 1
NP-23	SPARE/FUTURE SER MCP 2 FEEDER
NP-24	SPARE
NP-25	MAIN LUGS/SURGE ARRESTOR
NP-26	MAIN CONTROL PANEL
NP-27	SPARE
NP-28	SER MCP 1 CONTROL PANEL

MOTOR CONTROL CENTER - NAMEPLATE SCHEDULE
SCALE: NONE



REVISIONS

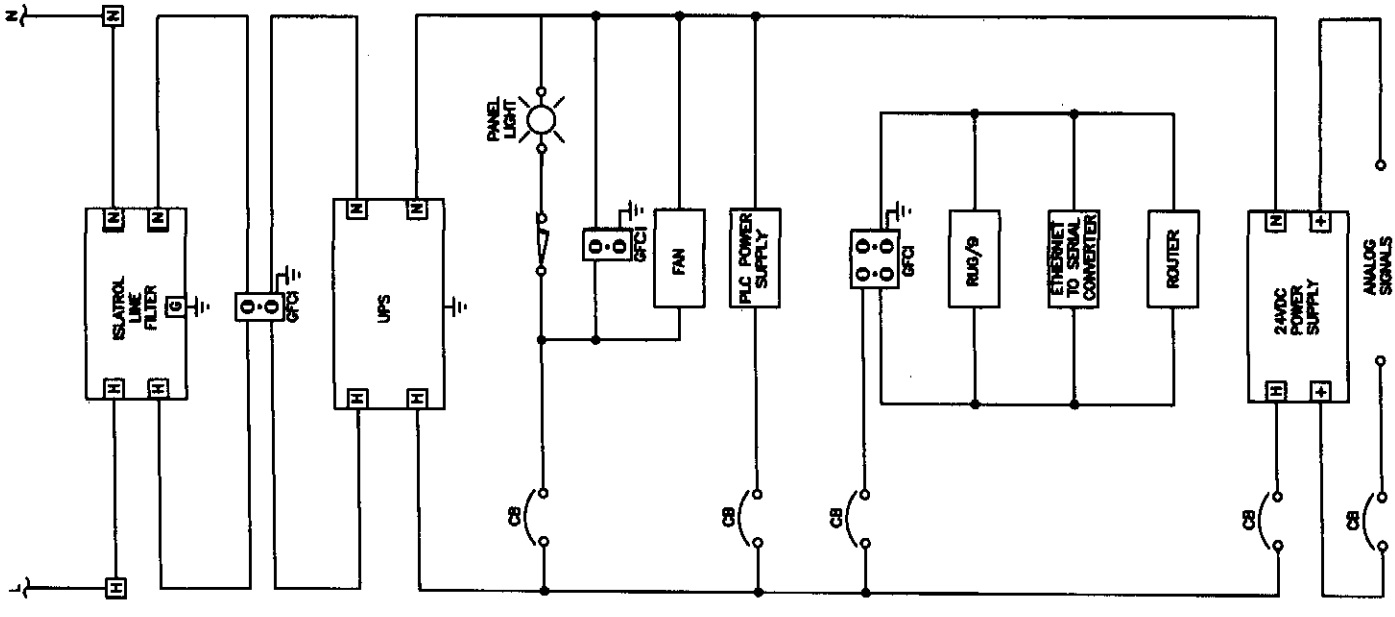
GENERAL NOTES

DESIGNED BY	BZ
DRAWN BY	FSM
CHECKED BY	SE
APPROVED BY	DMB
DATE PRINTED	SEPT 2007
SCALE	AS SHOWN
FILE NO.	

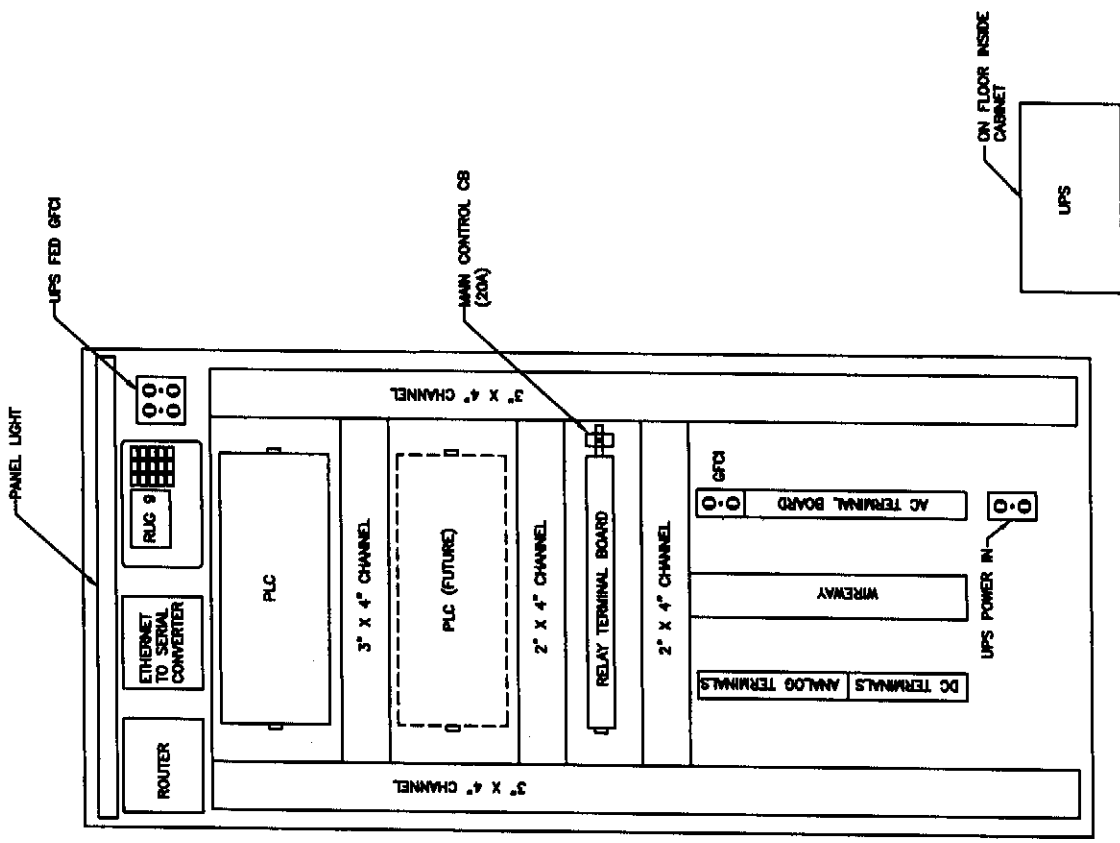
HAMMOND COLLIER
WADE LIVINGSTONE
SEATTLE (206) 632-2664
WENATCHEE (509) 662-1762
OMAK (509) 826-5861
LAKEWOOD (253) 472-1992

CITY OF ENTIAI
2007 WASTEWATER TREATMENT
FACILITIES IMPROVEMENTS
MOTOR CONTROL CENTER

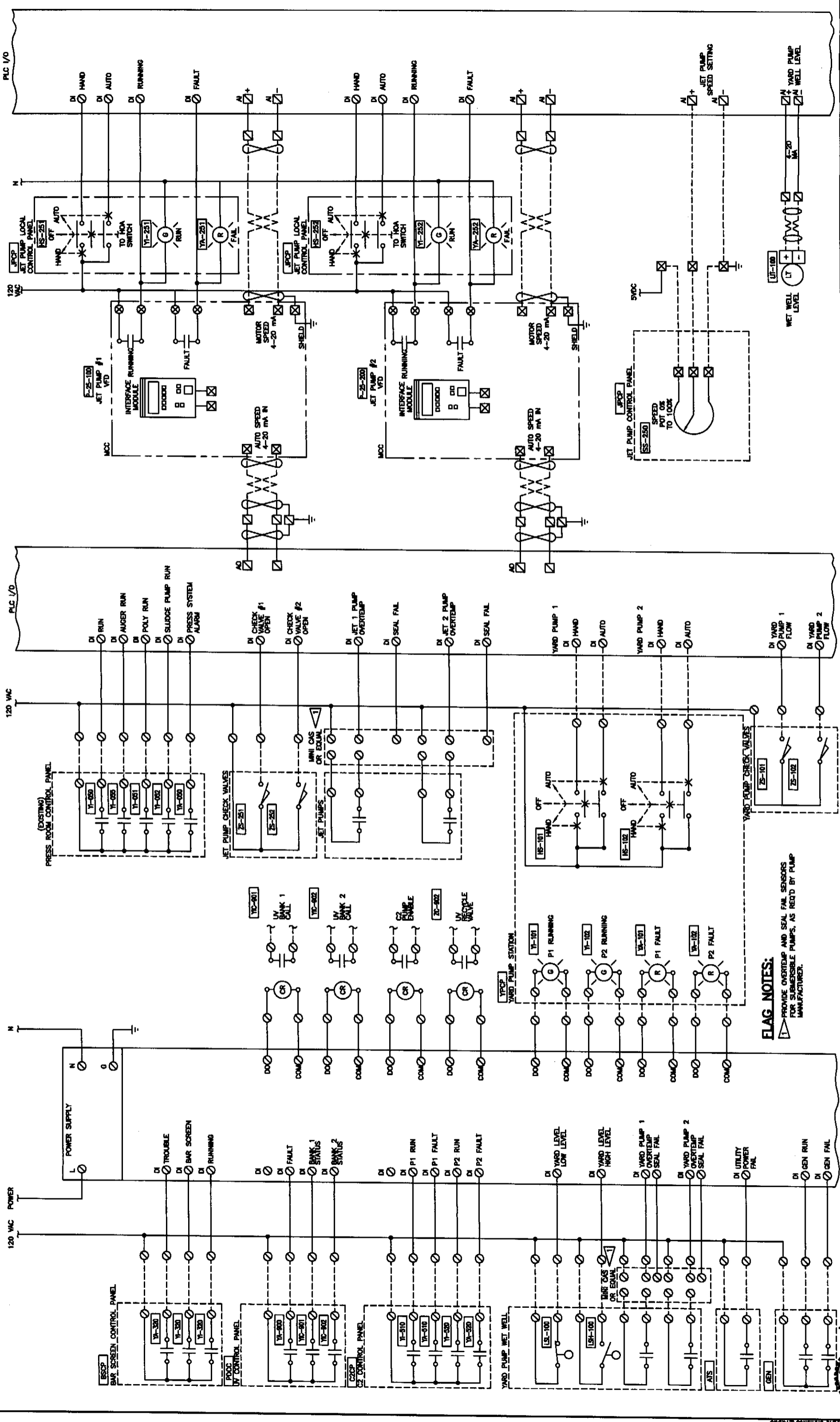
JOB NO. 052304-03
DRAWING NO. ET3
SHEET OF



MAIN CONTROL PANEL POWER DIAGRAM
SCALE: NONE

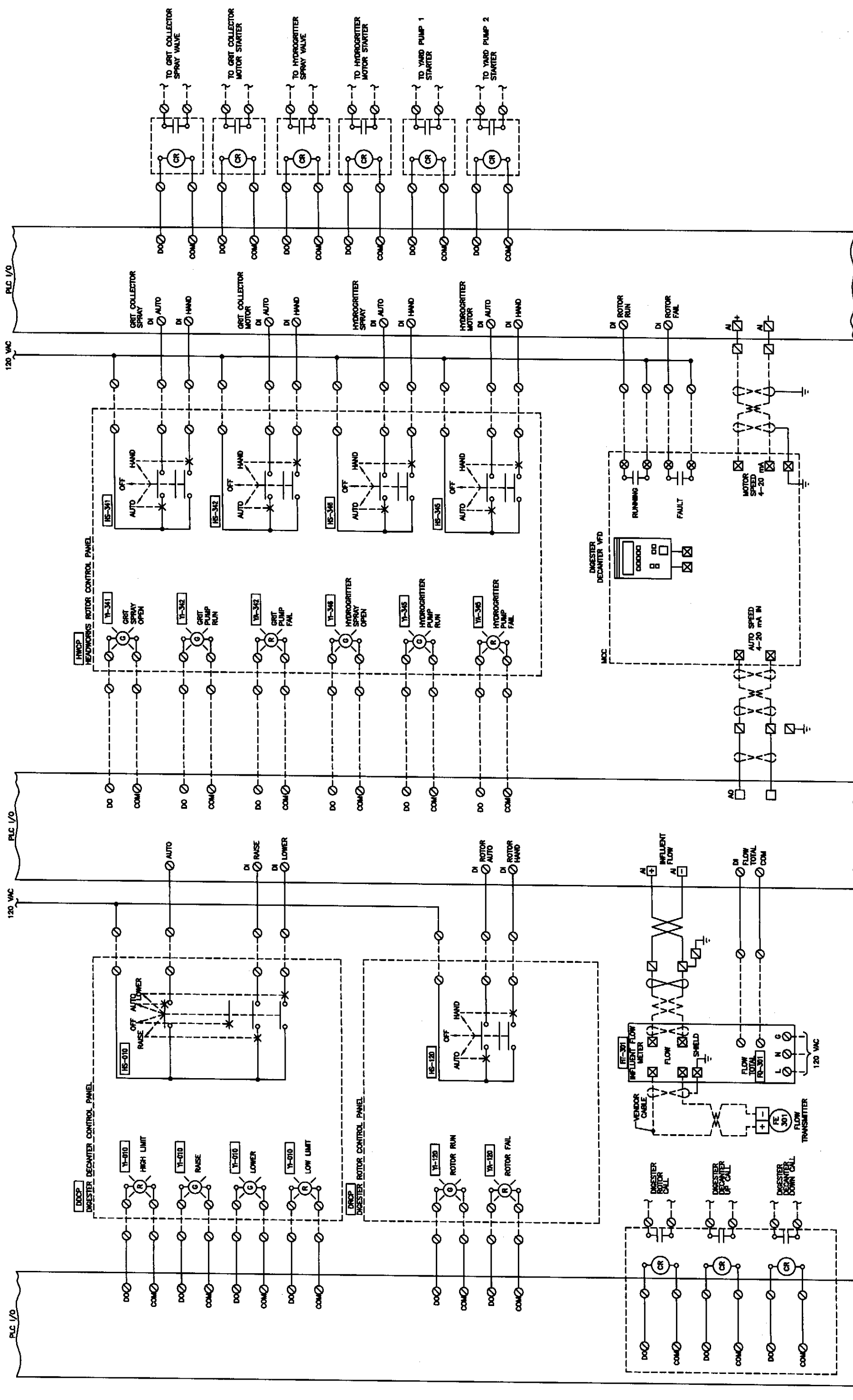


MAIN CONTROL PANEL INTERIOR ELEVATION
SCALE: NONE



FLAG NOTES:
 PROVIDE OVERTEMP AND SEAL FAIL SENSORS FOR SUBMERSIBLE PUMPS, AS REQ'D BY PUMP MANUFACTURER.

		CITY OF ENTIAI 2007 WASTEWATER TREATMENT FACILITIES IMPROVEMENTS CONTROL WIRING DIAGRAMS - SHEET 1	JOB NO. 052304-03 DRAWING NO. E14 SHEET OF
SEATTLE (206) 632-2664 WENATCHEE (509) 662-1762 OMAHA (509) 826-5861 LAKEWOOD (253) 472-1992	REVISIONS 11/20/09 		
DESIGNED BY: BZ DRAWN BY: RSM CHECKED BY: SE APPROVED BY: DMB DATE PRINTED: SEPT 2007 SCALE: AS SHOWN P.E. NO.	GENERAL NOTES 		



JOB NO. 052304-03
 DRAWING NO. E15
 SHEET OF

CITY OF ENTIAT
2007 WASTEWATER TREATMENT
FACILITIES IMPROVEMENTS
 CONTROL WIRING DIAGRAMS - SHEET 2

HAMMOND COLLIER
WADE LIVINGSTONE

SEATTLE (206) 532-2664
 WENATCHEE (509) 662-1762
 OMAHA (509) 826-5861
 LAKEWOOD (253) 472-1992

DESIGNED BY: BZ
 DRAWN BY: RSM
 CHECKED BY: SE
 APPROVED BY: DMS
 DATE PRINTED: SEPT 2007
 SCALE: AS SHOWN
 P.L. NO.

GENERAL NOTES

REVISIONS

ENTIA
 11/9/07